



## 3 Bed Property For Residential in Murcia

San Pedro del Pinatar

€239,900

Ref: 86009

- Garage
- Solarium
- Armored Door
- Air-Conditioning
- Garden
- Heating
- Community Pool
- porch
- Terrace
- Wardrobes cupboard
- Residencial

Telephone: +351 213 471 603

Email: [info@portugalhomes.com](mailto:info@portugalhomes.com)

Avenida da Liberdade 67B, 5th Floor, 1250-140 Lisboa, Portugal Licence AMI - 14414 | APEMIP 5940

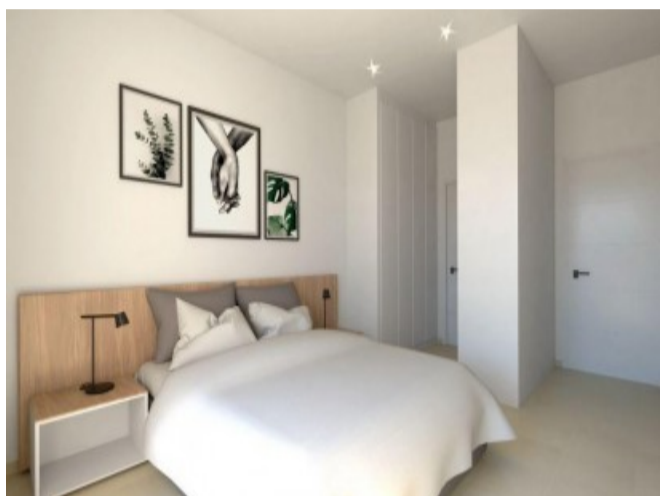


## Property Description

Exclusive residential of 16 modern apartments with first qualities, 3 bedrooms on the ground floor and 2 bedrooms on the top floor with a large solarium with great privacy. And 6 villas on the ground floor with 3 bedrooms with a solarium of more than 90 m<sup>2</sup>. The residential has a central common area landscaped with swimming pool, where you can enjoy the sun all year round, in addition to the large terraces that each house has and parking spaces. The villas are built on one floor. They have a built area of 90.71m<sup>2</sup> spread over 3 bedrooms, 2 bathrooms, a large living-kitchen-dining room of 31.70m<sup>2</sup>, and outdoor areas with a patio of 8.40m<sup>2</sup>, a porch of 5.15m<sup>2</sup> and a garden of 34.80m<sup>2</sup> and a solarium of 90.10m<sup>2</sup>. Included in the price: Kitchen equipped with appliances (Oven, Hood, Induction Hob, Fridge, Dishwasher and Microwave) LED halogens throughout the interior of the house. Glass from Solar Control. Underfloor heating in bathrooms. Communal area with swimming pool, artificial grass, trees and plants Modern construction. Parking space. Located in San Pedro del Pinatar, a privileged setting, just 5 minutes from the beaches of San Pedro del Pinatar and Lo Pagán and a few steps from the town centre and shopping centres. Prices from 239,900 Euros to 269,900 Euros. Delivery November 2020



# Gallery



Telephone: +351 213 471 603  
Email: [info@portugalhomes.com](mailto:info@portugalhomes.com)

Avenida da Liberdade 67B, 5th Floor, 1250-140 Lisboa, Portugal Licence AMI - 14414 | APEMIP 5940



## Additional Details

### Attributes

<b>Status</b> Available	<b>Land Area</b> 91m2
----------------------------	--------------------------

### Property Features

Garage	Garden	Terrace
Solarium	Heating	Wardrobes cupboard
Armored Door	Community Pool	Residencial
Air-Conditioning	porch	Appliances