

2 Bed Property For Residential in Alicante

€213,000

Torre Vieja

Ref: 52839

- Garden
- Solarium
- Wardrobes cupboard
- Residencial
- Elevator
- Alarm
- Armored Door
- Air-Conditioning
- Terrace
- Heating
- Community Pool

Telephone: +351 213 471 603

Email: info@portugalhomes.com

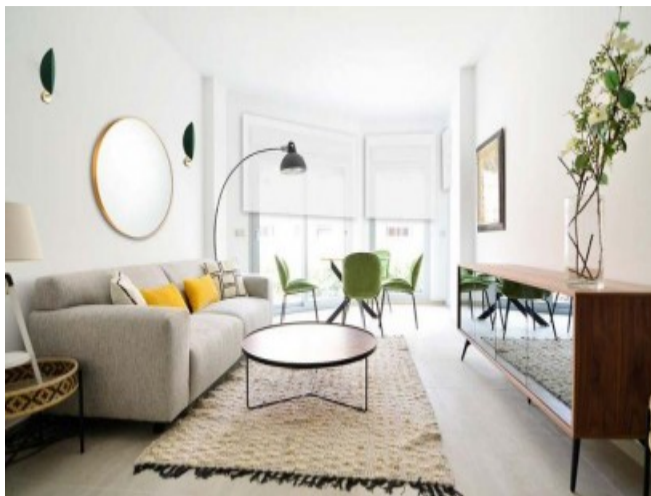
Avenida da Liberdade 67B, 5th Floor, 1250-140 Lisboa, Portugal Licence AMI - 14414 | APEMIP 5940



Property Description

Magnificent Penthouse bungalow in residential close to the sea, 2 bedrooms, 2 bathrooms, terrace and solarium. The Penthouses have a built area from 81.49m² to 88m² with 2 bedrooms, 2 bathrooms, a living-dining room-open kitchen, a solarium from 56m² to 60m². Included in the price: Alarm installation in the house with two cameras and a magnet. The paved area shall be combined with areas of plant land. Ventilation of housing by mechanical extraction. Water intake in solarium and ground floor terrace. Fiber optic installation for internet connection in the homes. The sanitary hot water (ACS) is produced by means of an aerothermal system, with hot water accumulator, with point support of electrical resistance. Complete installation of air conditioning (hot-cold). Bathrooms: Underfloor heating in bathrooms, Washbasin furniture with mirror and lighting. Fixed shower screens. Private garden ; Will be combined paved area with areas of vegetable land. Perimeter hedge with automatic drip irrigation. Private solarium on the deck with direct access from the house via private staircase, with water, electricity and television. Installation of the shower. Urbanization completely closed with pedestrian entrances and a vehicle access to the underground parking. All the houses have direct access to the urbanization, with landscaped areas, automatic irrigation, pedestrian crossings, LED lighting, 2 swimming pools, 2 splash pools, heated pool, jacuzzi and sauna, underground garage.

Gallery



Telephone: +351 213 471 603
Email: info@portugalhomes.com

Avenida da Liberdade 67B, 5th Floor, 1250-140 Lisboa, Portugal Licence AMI - 14414 | APEMIP 5940



Additional Details

Attributes

Status Available	Land Area 82m2
----------------------------	--------------------------

Property Features

Garden	Elevator	Terrace
Solarium	Alarm	Heating
Wardrobes cupboard	Armored Door	Community Pool
Residencial	Air-Conditioning	Jacuzzi
Water	Auto Irrigation.	Sauna
Parking		