

## 4 Bed Property For Residential in Murcia

San Pedro del Pinatar

€152,000

Ref: 53799

- Elevator
- Armored Door
- Kitchen Indep.
- Terrace
- Appliances
- porch
- Wardrobes cupboard
- Air-Conditioning
- Residencial

Telephone: +351 213 471 603

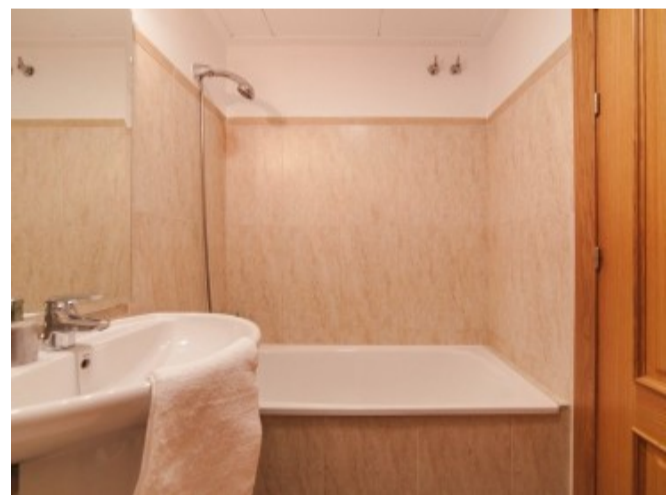
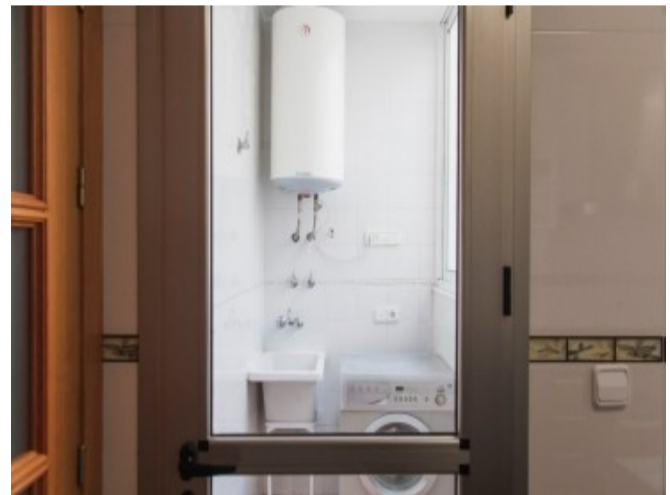
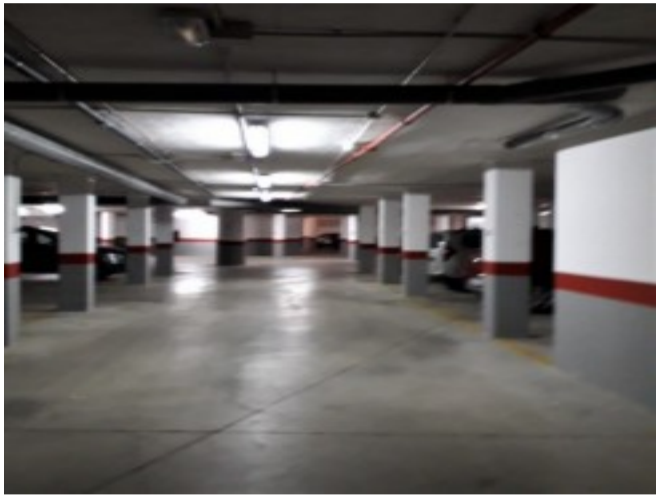
Email: [info@portugalhomes.com](mailto:info@portugalhomes.com)

Avenida da Liberdade 67B, 5th Floor, 1250-140 Lisboa, Portugal Licence AMI - 14414 | APEMIP 5940



## Property Description

Exclusive residential in San Pedro del Pinatar, which is magnificently located just 10 minutes from the beach, the Town Hall and on the road that leads to the famous Lo Pagán curve. Apartment available with an area of 150.25 m<sup>2</sup> built with 4 bedrooms, 2 bathrooms, an independent kitchen of 10m<sup>2</sup>, a living-dining room of 25.72m<sup>2</sup>, a terrace of 10 m<sup>2</sup> and a patio of 9m<sup>2</sup>. Included in the price: Automatic video door entry kit · Air conditioner · Appliances: extractor hood, oven, refrigerator, ceramic hob Optional parking spaces in the basement. San Pedro del Pinatar is a municipality on the Murcian coast that is located on the Mar Menor and is connected to the entire country through the AP-7. and 45 minutes from the main European capitals by Alicante airport. San Pedro del Pinatar has everything to live comfortably: the calm of the port and the sea, the healthy embrace of La Laguna, the proximity to all services and the joy of the Lo Pagán curve.



Telephone: +351 213 471 603

Email: [info@portugalhomes.com](mailto:info@portugalhomes.com)

Avenida da Liberdade 67B, 5th Floor, 1250-140 Lisboa, Portugal Licence AMI - 14414 | APEMIP 5940



## Additional Details

### Attributes

|                            |                           |
|----------------------------|---------------------------|
| <b>Status</b><br>Available | <b>Land Area</b><br>150m2 |
|----------------------------|---------------------------|

### Property Features

|                |            |                    |
|----------------|------------|--------------------|
| Elevator       | Terrace    | Wardrobes cupboard |
| Armored Door   | Appliances | Air-Conditioning   |
| Kitchen Indep. | porch      | Residencial        |