

## 3 Bed Property For Residential in Alicante

€228,900

### Rojales

Ref: 84211

- Garden
- Terrace
- Wardrobes cupboard
- Armored Door
- Community Pool
- Parking
- Residencial
- Appliances

Telephone: +351 213 471 603

Email: [info@portugalhomes.com](mailto:info@portugalhomes.com)

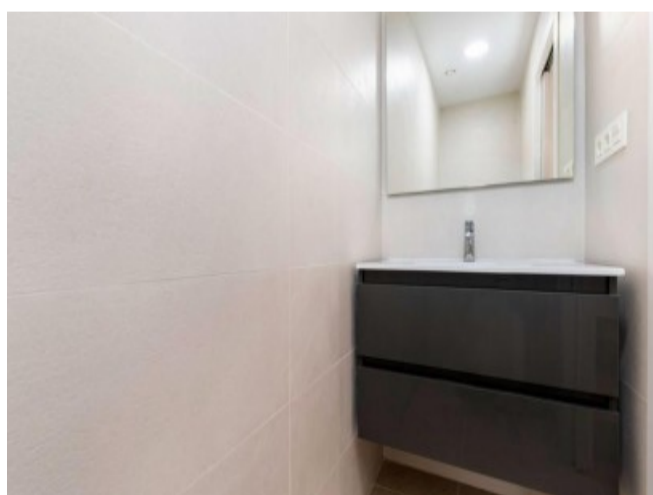
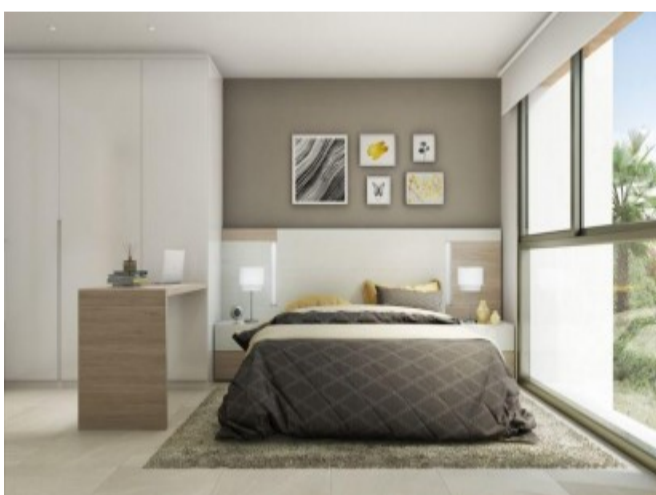
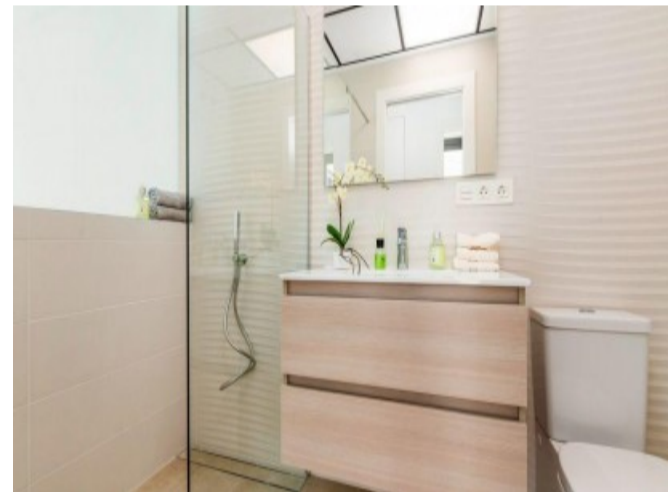
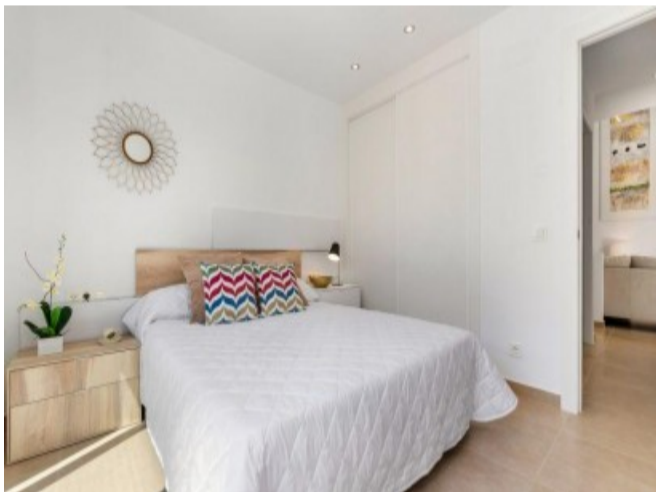
Avenida da Liberdade 67B, 5th Floor, 1250-140 Lisboa, Portugal Licence AMI - 14414 | APEMIP 5940





## Property Description

The Residencial is located in one of the most beautiful and quiet areas of the city of Rojales, surrounded by nature and very close to all the services offered by the municipality. Its excellent location makes the residential a perfect choice for those who seek tranquility without giving up the facilities that it grants to reside in the heart of the city. The residential consists of 13 modern style townhouses on private plots with terrace, parking area and private pool of 6x2.5 in option (12.900 Euros). The apartments consist of living room, fitted kitchen, 3 bedrooms, 3 bathrooms, basement and option to solarium with privileged views for 15,000 Euros. They are built on plots from 130m<sup>2</sup> to 151m<sup>2</sup>. The houses have a built area from 192m<sup>2</sup> to 201m<sup>2</sup> and consist of living room, fitted kitchen, 3 bedrooms (two of them en suite), 3 bathrooms, basement and option to solarium with privileged views (15.000 Euros). Including: Electric blinds in bedrooms Full bathrooms Indoor and outdoor lighting All of them carefully designed with high quality materials. Prices of 228,900 Euros and 282,700 Euros. Two keys ready! Others delivered in March 2020 and July 2020



Telephone: +351 213 471 603

Email: [info@portugalhomes.com](mailto:info@portugalhomes.com)

Avenida da Liberdade 67B, 5th Floor, 1250-140 Lisboa, Portugal Licence AMI - 14414 | APEMIP 5940



## Additional Details

### Attributes

<b>Status</b> Available	<b>Land Area</b> 192m2
----------------------------	---------------------------

### Property Features

Garden	Terrace	Wardrobes cupboard
Armored Door	Community Pool	Parking
Residencial	Appliances	