



Ray Adv 3.20.03 | file: URBA23_max | frame: 00008 | prmrEves: 28875435 | render time: 0h 9m 27.1s



3 Bed Property For Residential in Alicante

€194,000

Monforte Del Cid

Ref: 39801

- Air-Conditioning
- Armored Door
- Heating
- Garden
- Appliances
- Residencial
- Solarium
- Storeroom
- Community Pool
- Wardrobes cupboard
- Terrace

Telephone: +351 213 471 603

Email: info@portugalhomes.com

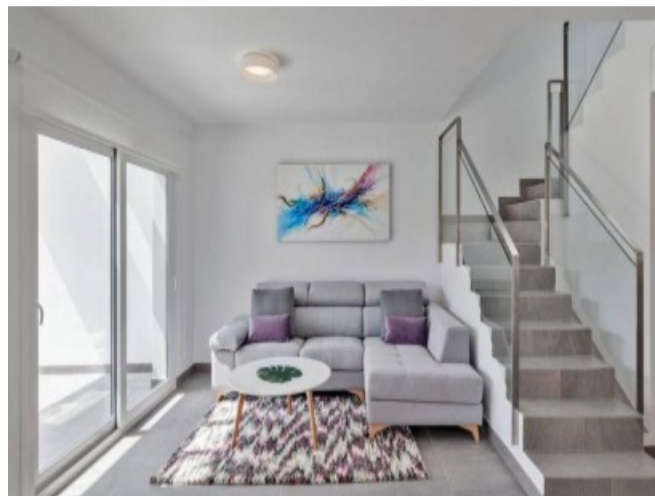
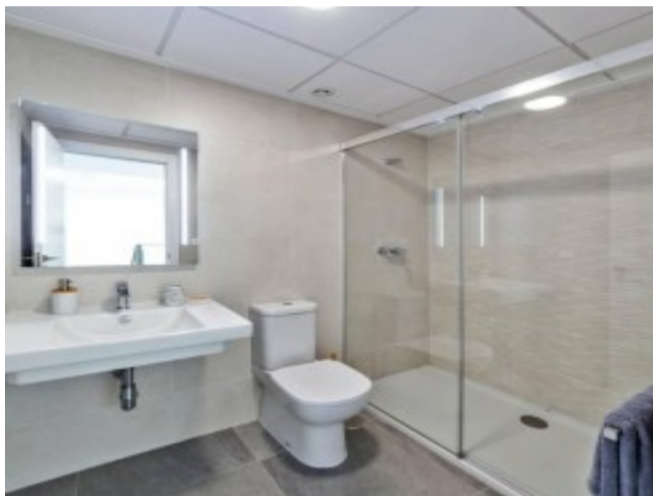
Avenida da Liberdade 67B, 5th Floor, 1250-140 Lisboa, Portugal Licence AMI - 14414 | APEMIP 5940



Property Description

Located in Monforte del Cid (Alicante), next to the Alenda Golf Course . PRIVATE RESIDENTIAL TOWNHOUSES with 3 bedrooms, 2 bathrooms, 1 toilet, nice living- dining area, including fully fitted kitchens equipped with a vitroceramic hob, extractor fan and an oven. They also have air conditioning/heating units, pre-installation of individual gas radiators and complete fitted wardrobes in all the bedrooms. These homes counts with a garden and private parking. The Complex has an array of private gardens, a communal swimming pool, a club house, a bilingual English - Spanish school, and a supermarket. The complex is situated next to the Alenda Golf Club, a peaceful area by beautiful views, and just 15 minutes from Alicante's town centre and golden beaches. Elche's famous palm grove, now included on the World Heritage list, is just 8 minutes away. Surrounded by the mountains of Sierra de las Águilas and Sierra del Cid offer a stunning backdrop and allow residents to enjoy the breath-taking views, nature walks and even bird watching. The historical village of Monforte del Cid is also nearby offering a selection of local amenities. It is just 15 minutes from the golden beaches of Alicante, Alicante Airport and the town of Elche. Completion on 2022. Distance to the Beach 20 km, to the Airport 26 km and to the Golf 0.050 km.

Gallery



Telephone: +351 213 471 603
Email: info@portugalhomes.com

Avenida da Liberdade 67B, 5th Floor, 1250-140 Lisboa, Portugal Licence AMI - 14414 | APEMIP 5940



Additional Details

Attributes

Status Available	Land Area 105m2
----------------------------	---------------------------

Property Features

Air-Conditioning	Appliances	Community Pool
Armored Door	Residencial	Wardrobes cupboard
Heating	Solarium	Terrace
Garden	Storeroom	Parking