

## 3 Bed Property For Residential in Alicante

**Finestrat**

- Garden
- Residencial

- Terrace
- Pool Own

# €500,000

Ref: 85464

- Parking
- Light

Telephone: +351 213 471 603

Email: [info@portugalhomes.com](mailto:info@portugalhomes.com)

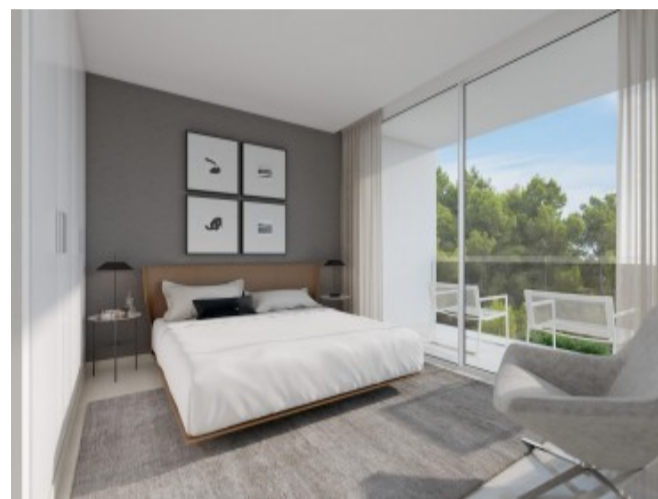
Avenida da Liberdade 67B, 5th Floor, 1250-140 Lisboa, Portugal Licence AMI - 14414 | APEMIP 5940



## Property Description

Exclusivity in a natural environment next to the Mediterranean Minimalist design villas in a natural space, combining elegance and comfort in an exclusive natural environment that respects the perfect balance between sea and nature. Promotion of independent villas located in the privileged environment of Sierra Cortina in Finestrat next to Benidorm. This set of single-family villas located on private plots allows you to enjoy life abroad with privacy. The integrated living room and kitchen together with the 3 bedrooms and 3 bathrooms offer spacious feelings. The outdoor area with a plot of more than 400 meters includes large terraces and a private pool, to fully experience the Mediterranean lifestyle enjoying the sun, light and nature. Altea, Calpe, Villajoyosa, Moraira and Benidorm are just some of the most emblematic and visited towns on the Mediterranean Costa Blanca that are very close to Finestrat, the location of this development of villas. Benidorm's famous beaches are less than 3 km away. The province of Alicante has modern communications that connect with the main highways, highways, the high-speed train and the tram. In addition, the Alicante-Elche International Airport connects with more than 110 destinations. The location of these villas with direct access to the main communication routes and 5 minutes from the Finestrat Shopping Center next to Benidorm make it a perfect place to enjoy all the services when you need them without giving up tranquility.

# Gallery



Telephone: +351 213 471 603

Email: [info@portugalhomes.com](mailto:info@portugalhomes.com)

Avenida da Liberdade 67B, 5th Floor, 1250-140 Lisboa, Portugal Licence AMI - 14414 | APEMIP 5940



## Additional Details

### Attributes

<b>Status</b> Available	<b>Land Area</b> 131m2
----------------------------	---------------------------

### Property Features

Garden	Terrace	Parking
Residencial	Pool Own	Light