



## 2 Bed Property For Residential in Alicante

Monforte Del Cid

€225,000

Ref: 21126

- Garden
- Terrace
- Wardrobes cupboard
- Community Pool
- Parking
- Residencial

Telephone: +351 213 471 603

Email: [info@portugalhomes.com](mailto:info@portugalhomes.com)

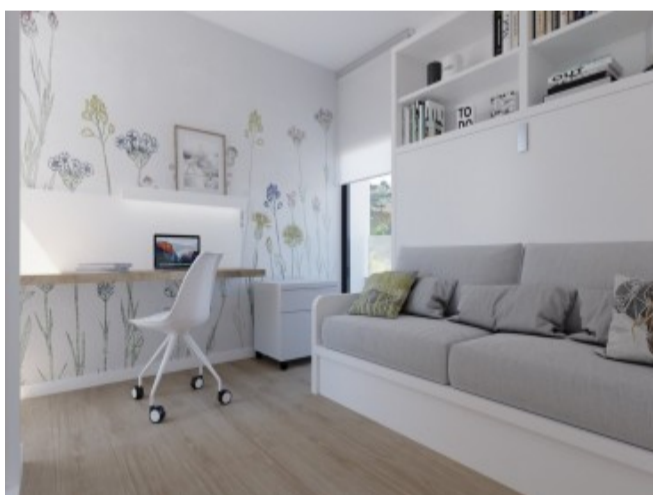
Avenida da Liberdade 67B, 5th Floor, 1250-140 Lisboa, Portugal Licence AMI - 14414 | APEMIP 5940



## Property Description

GROUND FLOOR BUNGALOW WITH PRIVATE GARDEN IN CAMPO GOLF FONT DEL LLOP Ground floor apartments with private garden, outdoor parking space, community pool and large common green areas. Homes aimed at the best orientation, pursuing the best views of the Font del Llop golf course. They have large windows that are properly oriented and protected, allowing the sun to warm in winter and illuminate the interior of the homes. Strategic carpentry openings provide cross ventilation from facades and interior patios. An environment heavily vegetated by native species that, with the consequent saving of water, will protect the bioclimatism, since its vegetal mass renews the air, generates cross ventilation and absorbs CO2 emissions. All homes are designed and equipped to meet high performance in terms of energy efficiency. Font del Llop is strategically located in the heart of the Province of Alicante. It is located 10 minutes from Alicante-Elche international airport. The closest train station is located in Alicante, 15 minutes from the golf course. In addition, a modern road network that connects it with the main cities of Spain. Font del Llop Golf Resort is located 20 minutes from the wonderful unspoilt beaches of the Mediterranean Sea. Therefore, the temperature is perfect (18° on average) for playing golf and practicing other outdoor sports, having 300 days of sunshine a year. The golf course also has 25 km of free terrain for hiking and mountain biking.

# Gallery



Telephone: +351 213 471 603

Email: [info@portugalhomes.com](mailto:info@portugalhomes.com)

Avenida da Liberdade 67B, 5th Floor, 1250-140 Lisboa, Portugal Licence AMI - 14414 | APEMIP 5940



## Additional Details

### Attributes

|                            |                          |
|----------------------------|--------------------------|
| <b>Status</b><br>Available | <b>Land Area</b><br>97m2 |
|----------------------------|--------------------------|

### Property Features

|                |         |                    |
|----------------|---------|--------------------|
| Garden         | Terrace | Wardrobes cupboard |
| Community Pool | Parking | Residencial        |