



## 5 Bed Property For Residential in Málaga

€1,180,000

### Benahavis

Ref: CA1927

- Pool view
- Tennis / paddle court
- Guest toilet
- Alarm
- Open plan kitchen
- Telephone
- Fireplace
- Game Room
- Fully fitted kitchen
- Private terrace
- Automatic irrigation system

Telephone: +351 213 471 603

Email: [info@portugalhomes.com](mailto:info@portugalhomes.com)

Avenida da Liberdade 67B, 5th Floor, 1250-140 Lisboa, Portugal Licence AMI - 14414 | APEMIP 5940

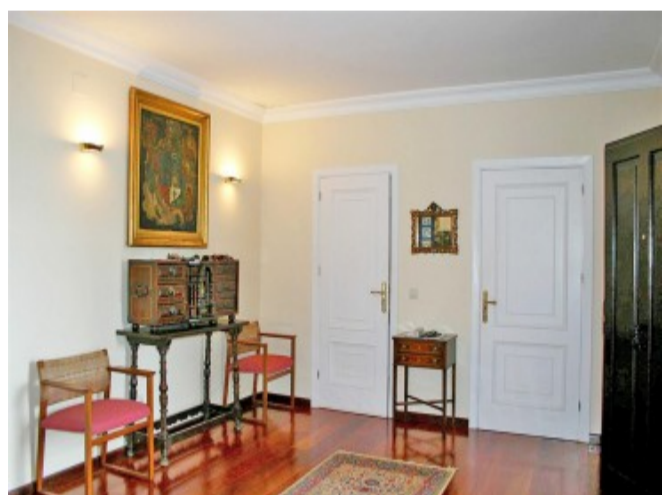
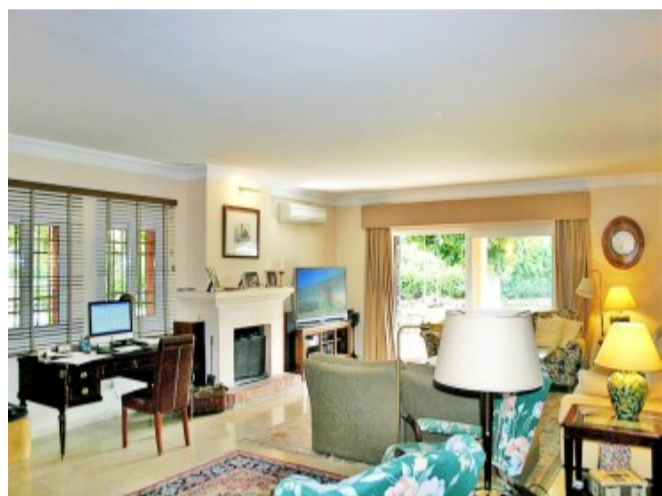


## Property Description

Beautiful family villa constructed on one level in the early seventies and totally refurbished in recent years. Located near the Ronda Road, this south west facing villa enjoys lovely views over its large garden with swimming pool reaching all the way to the Mediterranean Sea. The villa is situated within 5 minute drive of the centre of San Pedro, the nearest golf courses or the beach. This villa offers an elegant entrance hall with guest cloakroom and dressing room, 4 large bedrooms, 2 en-suite bathroom and 1 independent shower room, 1 maids room with en suite bathroom and further a spacious living room with open fireplace, large open plan fully fitted kitchen with dining area, 2 pantries and a laundry room with access to a patio. The master bedroom is en suite with complete bathroom enjoying a bath and a separate shower. Finally the property includes a games area with television corner, a garage for 2 cars as well as a car-port for 4 cars and more parking facilities on the entrance drive with fountain set within the automatic gates. The property is tiled in a combination of wood, marble and terracotta, fitted with central gas oil heating and A/C hot & cold as well as alarm and satellite television. The villa is surrounded by a large garden with automatic irrigation and mature trees offering swimming pool and badminton court.



# Gallery



Telephone: +351 213 471 603  
Email: info@portugalhomes.com

Avenida da Liberdade 67B, 5th Floor, 1250-140 Lisboa, Portugal Licence AMI - 14414 | APEMIP 5940





## Additional Details

### Attributes

<b>Status</b> Available	<b>Land Area</b> 470m2
----------------------------	---------------------------

### Property Features

Pool view	Open plan kitchen	Fully fitted kitchen
Tennis / paddle court	Telephone	Private terrace
Guest toilet	Fireplace	Automatic irrigation system
Alarm	Game Room	Front line golf
Close to town	Close to shops	Close to sea / beach
Close to golf	Amenities near	Sea view
Garden view	Air conditioning	Storage room
Gated community	Security service 24h	Utility room