

3 Bed Property For Residential in Málaga

€462,000

Estepona

Ref: CA2236

- Basement
- Mountain view
- Country view
- Uncovered terrace
- Amenities near
- Golf view
- Air conditioning
- Close to children playground
- Sea view
- Garden view
- Excellent condition

Telephone: +351 213 471 603

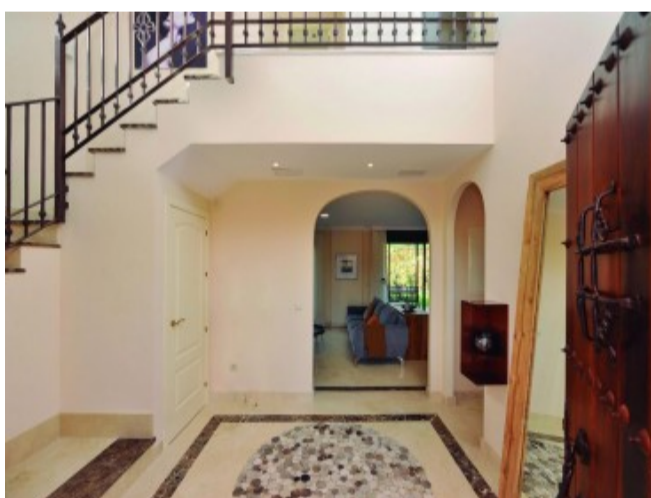
Email: info@portugalhomes.com

Avenida da Liberdade 67B, 5th Floor, 1250-140 Lisboa, Portugal Licence AMI - 14414 | APEMIP 5940



Property Description

Villa Golf Costa is a residential complex composed of 45 detached and semi-detached villas in a unique location surrounded by the lakes and greens of a newly developed golf course. The design of the houses is the expression of style and modern living. Spacious houses built to a high standard where you will enjoy the generously sized rooms distributed over two floors. The terraces with views to the golf course and lakes will add a unique experience to your daily life, as your family so richly deserves. The area west of Estepona is without doubt where the most exceptional projects are concentrated at the present time. New infrastructure springs up every day to endow this area with a spectacular future: schools, hospitals, shopping centres, yacht clubs and golf courses. In an area with a high demand for finished housing and with spectacular development prospects, Villa Golf Costa stands out as a fantastic investment for the present and as a sure wager for the future. The beach, golf, the mountains and the charm of the white villages with the distinctive seal of traditional Andalusia.



Telephone: +351 213 471 603

Email: info@portugalhomes.com

Avenida da Liberdade 67B, 5th Floor, 1250-140 Lisboa, Portugal Licence AMI - 14414 | APEMIP 5940



Additional Details

Attributes

Status Available	Land Area 162m2
----------------------------	---------------------------

Property Features

Basement	Amenities near	Sea view
Mountain view	Golf view	Garden view
Country view	Air conditioning	Excellent condition
Uncovered terrace	Close to children playground	Pets allowed
Marble floors	Guest toilet	Glass Doors
Fitted wardrobes	Fireplace	Covered terrace
Balcony	Private terrace	Close to golf
Close to schools	Close to sea / beach	Close to town
Front line golf	Kitchen equipped	Optional furniture
Close to port		