

## 2 Bed Property For Residential in Málaga

€449,000

### Estepona

Ref: CA2769

- Amenities near
- Gated community
- Solarium
- Heated pool
- Video entrance
- Utility room
- Sea view
- Private terrace
- Security service 24h
- Kitchen equipped
- Lift

Telephone: +351 213 471 603

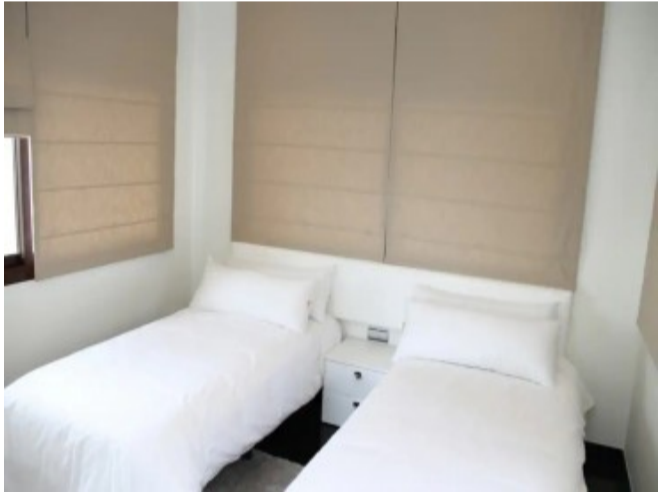
Email: [info@portugalhomes.com](mailto:info@portugalhomes.com)

Avenida da Liberdade 67B, 5th Floor, 1250-140 Lisboa, Portugal Licence AMI - 14414 | APEMIP 5940



## Property Description

Situated in the newly built luxurious beachside development next to the Kempinski Hotel and the fashionable Laguna Village, between the internationally known Puerto Banús in Marbella and Estepona called the New Golden Mile, with a boardwalk that will connect you to Estepona in a few minutes walk, where you will find all kind of amenities and leisure areas, and 5 minutes drive to the nearest Golf course. This privileged and quiet Urbanization offers illuminated tropical gardens and 2 outdoor swimming pools for adults and children, with leisure areas where you can find a heated indoor pool, Gym, Spa, covered paddle court with glass walls and indoor space for social activities as well as direct and exclusive access to the beach make the apartment an ideal solution for first residence as well as to enjoy a second holiday residence with unique landscape and fantastic rental potential. The access to the complex is controlled at all times by a security booth. Private parking and storage room included.



Telephone: +351 213 471 603

Email: [info@portugalhomes.com](mailto:info@portugalhomes.com)

Avenida da Liberdade 67B, 5th Floor, 1250-140 Lisboa, Portugal Licence AMI - 14414 | APEMIP 5940





## Additional Details

### Attributes

<b>Status</b> Available	<b>Land Area</b> 135m2
----------------------------	---------------------------

### Property Features

Amenities near	Video entrance	Security service 24h
Gated community	Utility room	Kitchen equipped
Solarium	Sea view	Lift
Heated pool	Private terrace	Excellent condition
Close to children playground	Fitted wardrobes	Close to sea / beach
Close to shops	Close to schools	Transport near
Air conditioning	Central heating	Close to town
Marble floors		