



## 2 Bed Property For Residential in Tenerife

€230,000

### Chayofa

Ref: C1962

- 24 hour reception
- off road parking
- community garden
- fitted wardrobes
- communal pool
- various terraces
- water
- fitted kitchen
- children's pool
- subtropical gardens
- electricity

Telephone: +351 213 471 603  
Email: info@portugalhomes.com

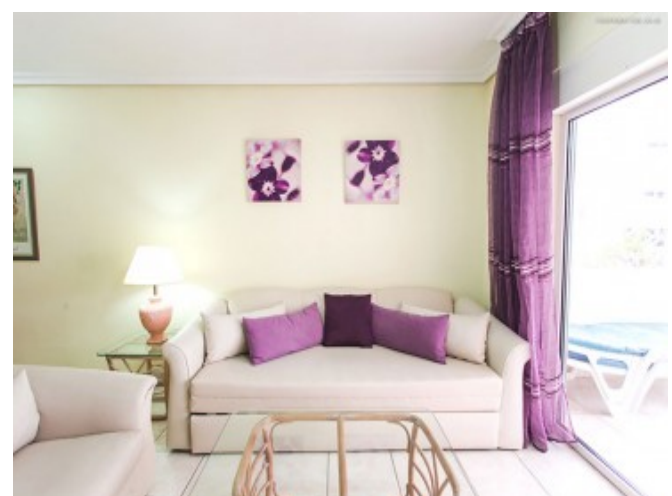
Avenida da Liberdade 67B, 5th Floor, 1250-140 Lisboa, Portugal Licence AMI - 14414 | APEMIP 5940





## Property Description

Chayofa Country Club: The 2 bedroom suites at Chayofa Country Club are similar in layout to the other apartments and are of a very good size. They feature all the same facilities that the one bedroom apartments have, such as a large well laid out lounge and American style kitchen area, dining area, Next to the lounge is the large double balcony with views over to the pool or mountain/hillside (ground floor suites will not have these views). There is plenty of space for both a table and chairs, plus sun loungers. The apartments also provide two spacious bedrooms, both of which have generous wardrobe space. The main bathroom has a bath and shower above it. There are plenty of facilities on-site; reception, bar, restaurant, communal swimming pool (including a children's pool). Nearby lies several popular restaurants and the tourist areas of Los Cristianos and Playa de las Americas are only a 5 minutes drive away. There is bus service nearby. Next to Chayofa lies Aquilas del Teide with it's eagle park. Chayofa is generally well known for its greenery; a quiet oasis just a short drive from the busy coastal resorts.



Telephone: +351 213 471 603

Email: [info@portugalhomes.com](mailto:info@portugalhomes.com)

Avenida da Liberdade 67B, 5th Floor, 1250-140 Lisboa, Portugal Licence AMI - 14414 | APEMIP 5940



## Additional Details

### Attributes

<b>Status</b> Available	<b>Land Area</b> 116m2
----------------------------	---------------------------

### Property Features

24 hour reception	communal pool	children's pool
off road parking	various terraces	subtropical gardens
community garden	water	electricity
fitted wardrobes	fitted kitchen	lounge dining area
quiet location	near transport	quality residence
spacious accommodation	well presented	en suite bathroom
kitchen diner	good rental potential	close to schools
furnished	freehold	close to restaurants
street parking	telephone possible	internet possible
inland	traditional features	close to medical facilities
fitted bathroom	close to tennis	close to airport