



4 Bed Property For Residential in Málaga

Casares

- armarios empotrados
- terraza
- suelo parquet
- cocina equipada
- aire acondicionado
- plaza garaje incluida
- lavadero
- cocina amueblada
- vistas al monte
- piscina
- garaje

€650,000

Ref: R3839803

Telephone: +351 213 471 603
Email: info@portugalhomes.com

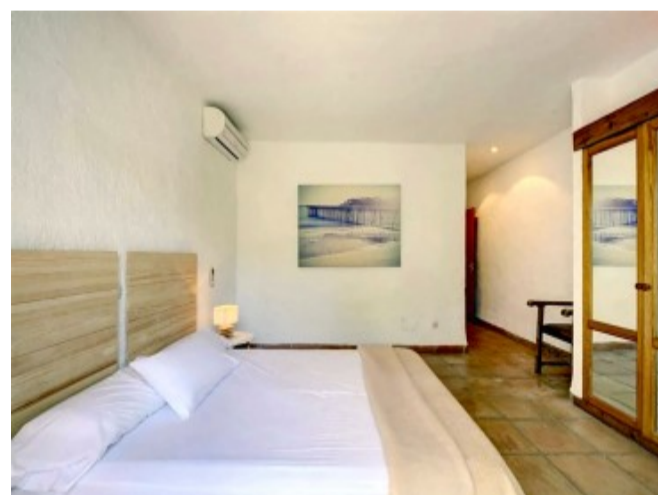
Avenida da Liberdade 67B, 5th Floor, 1250-140 Lisboa, Portugal Licence AMI - 14414 | APEMIP 5940



Property Description

CHARMING ANDALUCIAN RUSTIC STYLE FINCA ON A 8.000m² PLOT. Nestling in the unique and beautiful La Acedia Valley at the foot of the Sierra Bermeja mountain, NEXT TO A NATURAL PARK, mid-way between Estepona and Casares, in land, 15 MIN. DRIVE FROM THE COAST. where to find all kind of amenities, gofl courses and leisure areas. There is also some really nice restaurants near by and the Casares village in just 10min. drive. The villa was design by the famous arquitect Aubrey David, a specialist in rustic style properties, with windows giving indirect lights, wooden beams, different fire places, 3 in this case and built on split levels, plants area in the bathrooms with windows enjoy views to the garden and green areas. The garden has a very nice pool area with a large flat area and a pond next to it on 2 different levels with a cascade facing the property. It is surrounded by rustic land and fruit farms. With a good access and a large parking next to the main entrance and through a drive way, this property has complete privacy and is very quite and peaceful, WITH 360 VIEWS TO THE FOREST AND MOUNTAINS. At this moment there is 4 bedrooms and 2 living areas, one of them of 80m². There is also a really large area which can be built another 2 large bedrooms with fantastic views, so it has an enormous potential. THE VIEWING IS HIGHLY RECOMMENDED.

Gallery



Telephone: +351 213 471 603
Email: info@portugalhomes.com

Avenida da Liberdade 67B, 5th Floor, 1250-140 Lisboa, Portugal Licence AMI - 14414 | APEMIP 5940



Additional Details

Attributes

Status Available	Land Area 414m2
----------------------------	---------------------------

Property Features

armarios empotrados	aire acondicionado	vistas al monte
terraza	plaza garaje incluida	piscina
suelo parquet	lavadero	garaje
cocina equipada	cocina amueblada	barbacoa
parking		