



## 2 Bed Property For Residential in Málaga

€235,000

### Bahía de Casares

Ref: R3678638

- armarios empotrados
- vistas al mar
- vistas al golf
- ventanas climalit
- aire acondicionado
- solárium
- puerta de seguridad
- plaza garaje incluida
- piscina comunitaria
- parking
- terraza

Telephone: +351 213 471 603

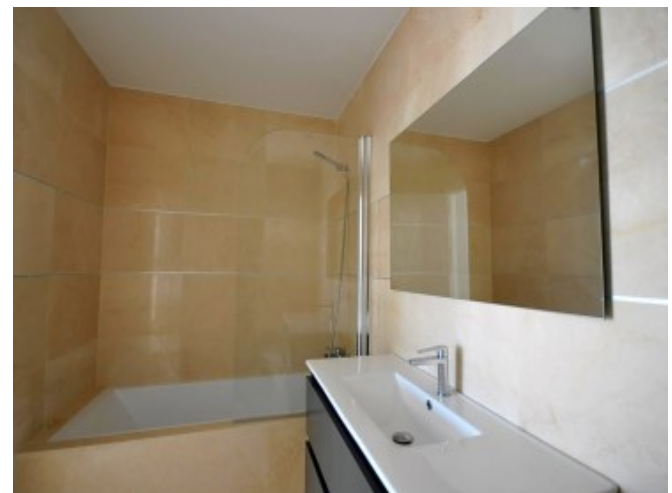
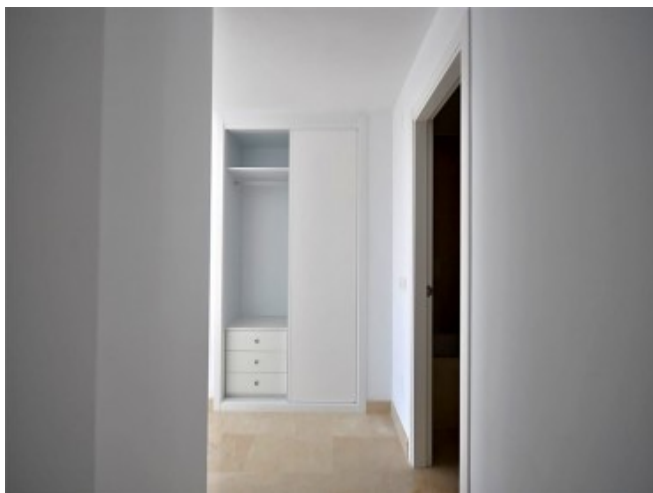
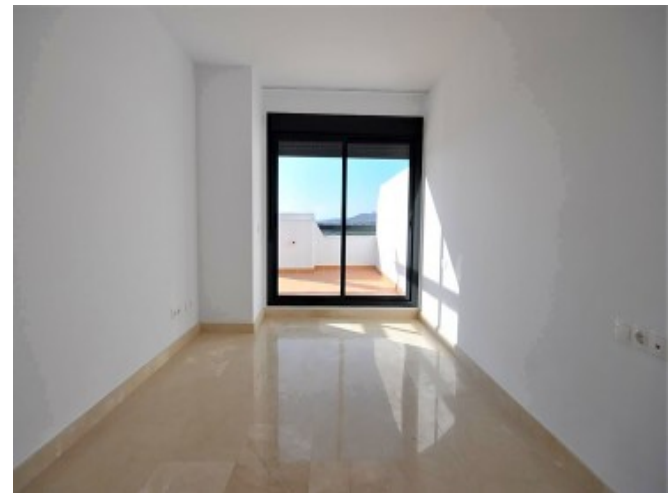
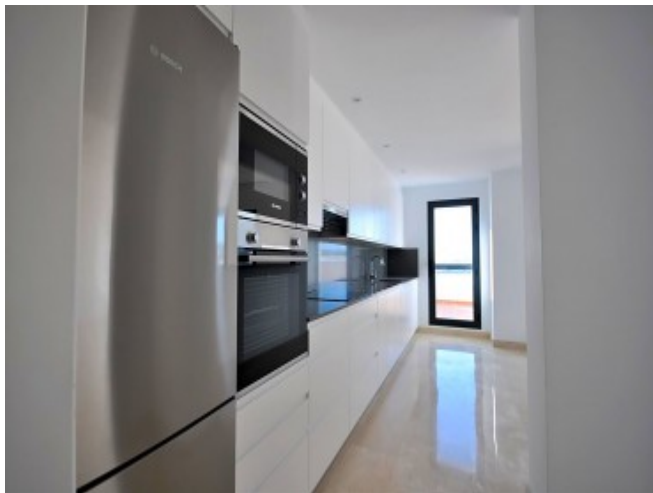
Email: [info@portugalhomes.com](mailto:info@portugalhomes.com)

Avenida da Liberdade 67B, 5th Floor, 1250-140 Lisboa, Portugal Licence AMI - 14414 | APEMIP 5940



## Property Description

Exclusive FIRST FLOOR APARTMENT located in Casares Bay, rodeado por uno de los más prestigiosos campos de golf de la Costa del Sol, with AMAZING VIEWS OVER THE SEA AND GOLF COURSES from its LARGE TERRACES south west facing. Walking distance to the marvellous beaches of Casares Playa, 10 minutes quiet walk to the comercial area of Sabinillas, and Puerto de la Duquesa .Only 20 minutes away from Gibraltar airport and 50 minutes from Malaga International airport. This property is within a private residential complex, equipped with 24h security cameras, 2 swimming pools, gardens, viewpoints, and indoor and outdoor gym. Built with LUXURY QUALITIES, kitchens furnished with home appliances included, air conditioning (cold-heat) fully installed with remote control, marble floors, and first level stoneware, fully fitted wardrobes, security door and community internet. Parking and storage room, which you can access directly from the lift, are included in the price. Great investment opportunity. Must be seen!



Telephone: +351 213 471 603

Email: [info@portugalhomes.com](mailto:info@portugalhomes.com)

Avenida da Liberdade 67B, 5th Floor, 1250-140 Lisboa, Portugal Licence AMI - 14414 | APEMIP 5940





## Additional Details

### Attributes

<b>Status</b> Available	<b>Land Area</b> 82m2
----------------------------	--------------------------

### Property Features

armarios empotrados	vistas al mar	vistas al golf
ventanas climalit	aire acondicionado	solárium
puerta de seguridad	plaza garaje incluida	piscina comunitaria
parking	terraza	orientación oeste
orientación sur	ascensor	cocina equipada
garaje	suelo mármol	jardín comunitario
lavadero	obra nueva	gimnasio